

# Customer Information Sheet

DRAWING No.: M80-899XXXX

IF IN DOUBT - ASK

Ⓒ

NOT TO SCALE

THIRD ANGLE PROJECTION

ALL DIMENSIONS IN mm

BRITISH STANDARD  
ORDER CODE: TO BS9525 F0033

**B5740-1XX-F-D-X**

TOTAL No. OF WAYS: \_\_\_\_\_  
02 TO 07, 17 & 22

FINISH: \_\_\_\_\_  
0 = GOLD CLIP, TIN SHELL  
2 = GOLD CLIP, GOLD SHELL

ORDER CODE:

**M80-899XXXX**

TOTAL No. OF WAYS: \_\_\_\_\_  
02 - 07, 17 & 22

FINISH \_\_\_\_\_  
01 = GOLD CLIP, TIN SHELL  
05 = GOLD CLIP, GOLD SHELL

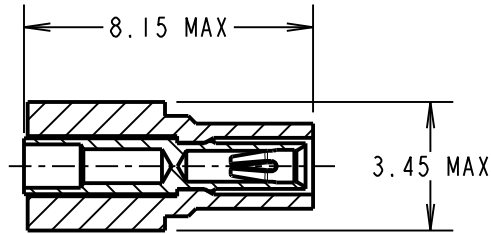
**SPECIFICATIONS:**

**MATERIAL:**  
MOULDING = GLASS-FILLED POLYESTER UL94V-0, BLACK  
CLIP = BERYLLIUM COPPER  
SHELL = COPPER ALLOY

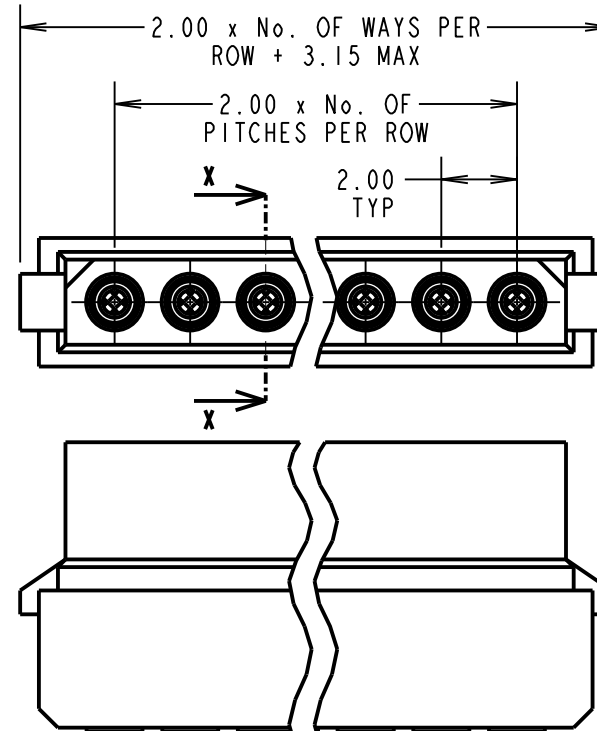
**FINISH:**  
01 = 0.30µ GOLD CLIP, 4.0µ 100% TIN OVER NICKEL SHELL  
05 = 0.30µ GOLD CLIP, 0.28µ GOLD SHELL

**ELECTRICAL:**  
CURRENT RATING AT 25°C = 3.0A MAX  
CURRENT RATING AT 85°C = 2.2A MAX  
WORKING VOLTAGE = 120V AC/DC  
VOLTAGE PROOF = 360V AC/DC  
CONTACT RESISTANCE:  
INITIAL: 20mΩ MAX  
AFTER CONDITIONING: 25mΩ MAX  
INSULATION RESISTANCE:  
INITIAL = 1000MΩ MIN  
AFTER CONDITIONING = 100MΩ MIN

**MECHANICAL:**  
DURABILITY = 500 OPERATIONS  
**ENVIRONMENTAL:**  
TEMPERATURE RANGE = -55°C TO +125°C  
PACKING = BAG (CONTACTS AND MOULDINGS UN-ASSEMBLED)  
FOR COMPLETE SPECIFICATION, SEE COMPONENT SPECIFICATION C005XX (LATEST ISSUE)



SECTION X-X



**NOTES:**

- RECOMMENDED WIRE TYPE = BS3G210 TYPE A, PTFE INSULATED, 22 AWG. MAX INSULATION DIAMETER = Ø1.10mm. STRIP WIRE BY 2.00mm.
- FOR EXTRA CONTACTS, USE PART NUMBER M80-0110005 FOR M80-899XX05 AND M80-0110001 FOR M80-899XX01.
- RECOMMENDED HAND CRIMP TOOL = M22520/2-01 WITH POSITIONER T5747. REFER TO TOOLING INSTRUCTION SHEET IS-01 FOR COMPLETE CRIMPING INSTRUCTIONS.
- CONTACT INSERTION AND EXTRACTION TOOL = Z80-280. REFER TO TOOLING INSTRUCTION SHEET IS-25 FOR ASSEMBLY INSTRUCTIONS.

SB	12	22.07.11	11376
NAME	ISS.	DATE	C/NOTE
APPROVED:		S.BENNETT	
CHECKED:		M.G.PLESTED	
DRAWN:		W. J. BOURNE	
CUSTOMER REF.:			
ASSEMBLY DRG:			

**HARWIN**

HARWIN USA TEL: 603 893 5376 FAX: 603 893 5396 mis@harwin.com	HARWIN Europe (UK) TEL: 023 9231 4545 FAX: 023 9231 4590 mis@harwin.co.uk	HARWIN Asia TEL: +65 6 779 4909 FAX: +65 6 779 3868 mis@harwin.com.sg
--	--	--

THIS DRAWING AND ANY INFORMATION OR DESCRIPTIVE MATTER SET OUT HEREON ARE CONFIDENTIAL AND COPYRIGHT PROPERTY OF THE HARWIN GROUP AND MUST NOT BE DISCLOSED, LOANED, COPIED OR USED FOR MANUFACTURING, TENDERING OR FOR ANY OTHER PURPOSE WITHOUT THEIR WRITTEN PERMISSION.

**TOLERANCES**  
X. = ±1mm  
X.X = ±0.25mm  
X.XX = ±0.10mm  
X.XXX = ±0.01mm  
**ANGLES = ±5°**  
UNLESS STATED

**MATERIAL:**  
SEE ABOVE  
**FINISH:** SEE ABOVE  
**S/AREA:** mm<sup>2</sup>

**TITLE:** DATAMATE CRIMP SIL SOCKET ASSEMBLY LARGE BORE (22AWG)  
**DRAWING NUMBER:** M80-899XXXX  
SHT 2 OF 2